



## FACT SHEET

# Truckee River Flood Funding Study

### Challenge:

The **Truckee River Flood Project** is being designed and built by a consortium of local governments known as the **Flood Project Coordinating Committee (FPCC)**, in cooperation with the **U.S. Army Corps of Engineers (Corps)**. The local FPCC sponsors include **Washoe County, Storey County, Sparks, Reno, the University of Nevada-Reno, and the Pyramid Lake Paiute Tribe**, among others. The project is now in its last year of planning and feasibility design, with local construction expected to start in 2008 and Corps construction slated to start in 2009.

Flood project features include replacement of 8 bridges, construction of 10 miles of new levees and flood walls to protect residents and businesses who now flood about every 5-10 years, construction of the terraced "Living River Parkway" along the Truckee River between 395 and I-80, elevation of homes out of harm's way, construction of a new detention pond and large regional park, 50 miles of walking and biking trails, and restoration of 50 miles of the Truckee River from Reno to Pyramid Lake, including removal of dams which block fish from spawning in the river.

The total cost of the Flood Project is currently estimated to be **\$800 million**. The cost will be split by the Corps and the local sponsors, approximately 50% each. The local partners' share of costs is expected to be approximately \$400 million. Funding for the flood project is currently being provided by collection of a 1/8-cent sales tax, which is expected to generate \$100 million in bond funding over 30 years. A gap of \$300 million remains. **This is the focus of the Truckee River Flood Funding Study.**

### Flood Funding Study:

In January 2008, the FPCC hired the **FCS Group** (a financial consulting firm from Washington state) and **CH2Mhill** (a locally based engineering firm) to analyze the economic benefits and costs of the flood project to the community, and to help identify a scientifically supportable way to raise the needed \$300 million dollars. As part of that effort, the firms are identifying the areas where rain runs off and contributes to flooding in lower areas of the Truckee Meadows, as well as properties which now flood, but which will be dry or drier once the flood project is built. The benefit of the new river parkway, river restoration, recreational areas, and open space, will also be identified.

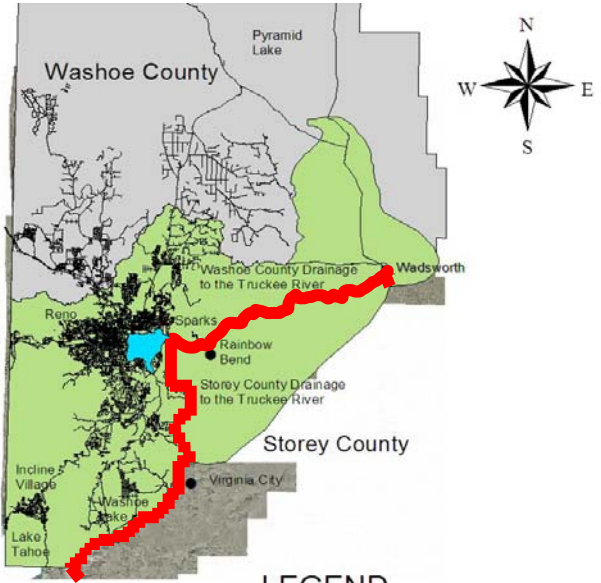
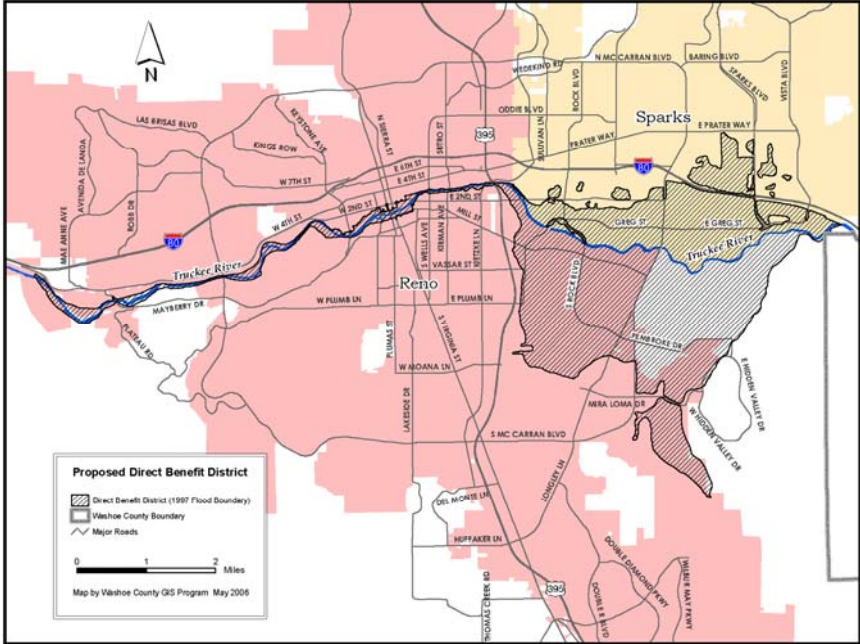
In addition to the above tasks, the consultant will also:

- Provide a scientific basis for developing rates or charges for each of the flood funding areas to help fund the construction, operation and maintenance of the Flood Project,
- Provide a sound basis by which to potentially divide revenue generation responsibilities between jurisdictions,
- Assist each of the partner jurisdictions in evaluating ways to generate revenues,
- Assess the potential impact of imposing flood funding areas and their associated charges on various segments of the community (AKA economic sensitivity analysis).

### Study Timing:

February	Data Collection
March-June	Complete Study Tasks
July	Final Report
August (?)	Public Hearings

# Proposed Direct Benefit Area



## Contributing Runoff Area

- LEGEND**
- 1997 Flood Boundary
  - Truckee River Drainage Area
  - Washoe-Storey County Line

<b>More Information:</b>	Website: <a href="http://www.truckee flood.us">www.truckee flood.us</a>
Truckee River Flood Project	775-850-7460
Naomi Duerr, Director	775-850-7420
Paul Urban, Project Manager	775-850-7428
Mimi Fujii-Strickler, Project Supervisor	775-850-7431
Susie Kapahee, Public Information Officer	775-850-7456